

Toto Creek Park

154 Toto Creek Park Road Dawsonville, GA 30534

Phone: (706) 344-3646

Email: recreation@dawsoncountyga.gov

Website: www.dawsoncounty.org/parksrec



All information is subject to change.

Map of the park and facility locations is on Page 3.

Policies and rules are available on Pages 4-5.

CAMPSITES

- 9 available (primitive)
 - *Specs for each site available on Page 2*
- Restrooms nearby
- Host Camper onsite
- Fire pit, picnic table, charcoal grill, and lantern hook at each site
- \$25 per campsite per day
- Campsite reservations are available online only at www.dawsoncountyga.gov/parksrec
- Open March 1-October 31

BOAT RAMPS

- 4 ramps available (based on lake water levels)
- 1 courtesy dock available (based on lake water levels)
- Restrooms nearby
- \$6 (1-day pass)
- \$30 resident / \$70 non-resident (annual pass)
- Open year-round

DAY USE AREAS

- Picnic tables and grills available
- Restrooms nearby
- \$6 (1-day pass)
- \$30 resident / \$70 non-resident (annual pass)
- No call ahead reservations (rented on a first-come, first-served basis only)
- Open year-round

ANNUAL PASSES

- Available for Boat Ramp and Day-Use areas only
- Individual Passes: \$30 resident / \$70 non-resident

Annual Passes may be purchased at the main office at Rock Creek Sports Complex during regular business hours (Mon-Fri 8:00AM-5:00PM) or online at www.dawsoncountyga.gov/parksrec.

America The Beautiful passes are accepted at this park; however, purchasing the passes are not available through Dawson County Parks & Recreation. Please visit <https://store.usgs.gov/recreational-passes> for additional information on prices, eligibility, purchasing passes, etc.

Toto Creek Park Campsite Information
154 Toto Creek Park Rd Dawsonville, GA 30534

Site 1

- Back-in paved drive with moderate incline
- Space for 30' maximum camper
- Water entry not recommended
- Great buddy site with Site 2

Site 2

- Back-in paved drive with slight incline
- Space for 30' maximum camper
- Water entry not recommended
- Great buddy site with Site 1 or 3

Site 3

- Pull-through driveway
- Space for 30' maximum camper
- Water entry not recommended
- Great buddy site with Site 2 or 4

Site 4

- Back-in paved drive with moderate incline
- Space for 30' maximum camper
- Water entry not recommended
- Great buddy site with Site 3 or 4

Site 5

- Back-in paved drive with slight incline
- Space for 35' maximum camper
- Water entry not recommended
- Great buddy site with Site 4 or 6

Site 6

- Back-in paved drive with slight incline
- Space for 35' maximum camper
- Water entry not recommended
- Great buddy site with Site 5 or 7

Site 7

- Back-in paved drive with slight incline
- Space for 30' maximum camper
- Water entry not recommended
- Great buddy site with Site 6 or 8

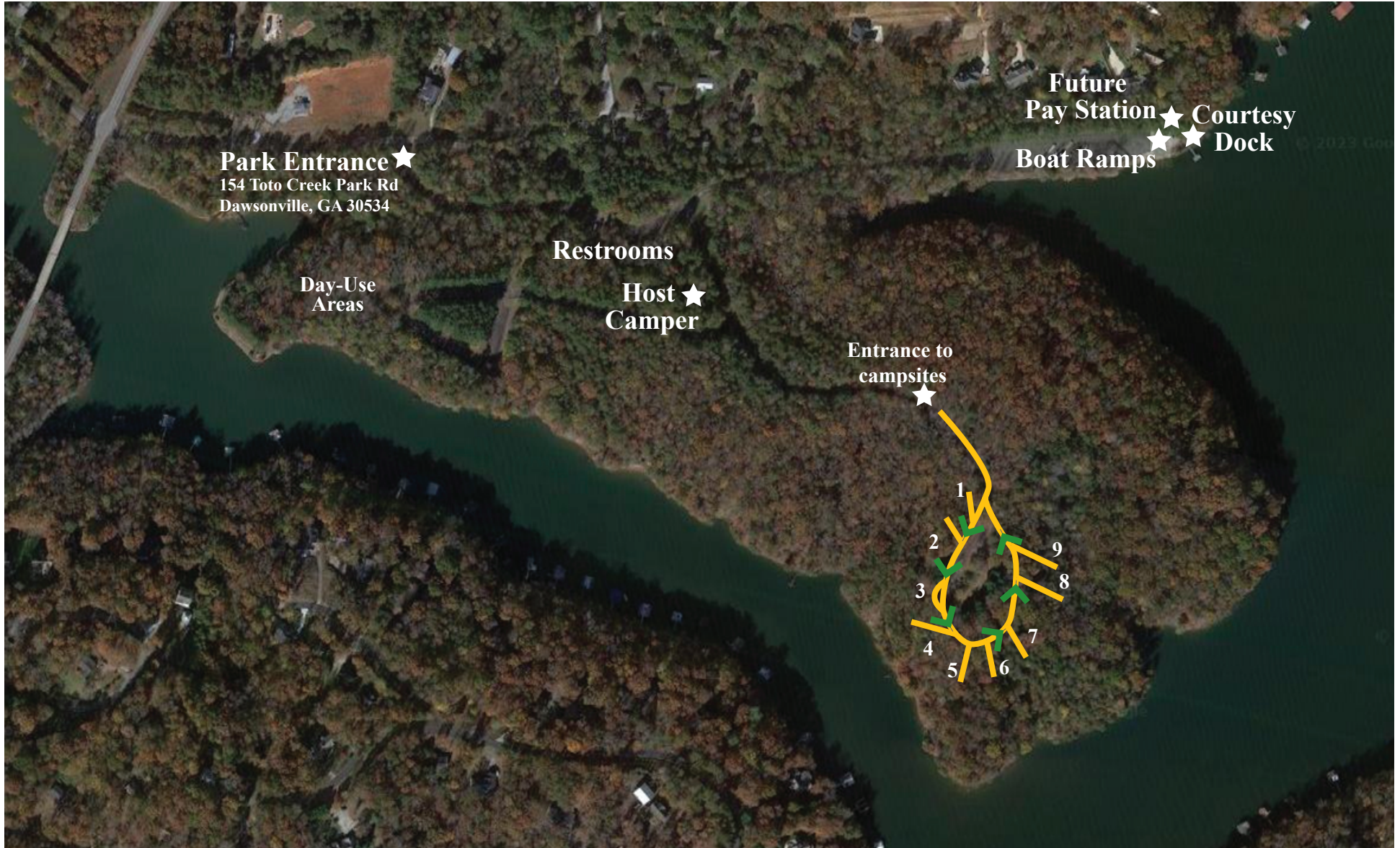
Site 8

- Back-in paved drive with slight incline
- Space for 35' maximum camper
- Water entry not recommended
- Great buddy site with Site 7 or 9

Site 9

- Back-in paved drive with slight incline
- Space for 35' maximum camper
- Water entry not recommended
- Great buddy site with Site 8

Toto Creek Park



CAMPGROUND RULES

CAMPSITE OCCUPANCY is limited to a maximum of 8 people and 3 vehicles. Due to limited parking, only one camper trailer or motor home is allowed per site. All tents must be placed on the designated impact area.

VISITORS of registered campers must depart the campground by 9:30PM or when the camper checks out prior to this time.

CHECK-OUT TIME is 11:00AM. An additional fee will be charged for late departure.

CHECK-IN TIME is 4:00PM.

LENGTH OF STAY is no longer than 14 days.

MINORS: Only adults (18 years or older) may rent a campsite. Minors may not be left in campground without adult supervision.

MOTORIZED VEHICLES operated by visitors in the park must have a license tag and be operated by licensed drivers. Vehicles may not be operated or parked off the roadway.

GARBAGE should be deposited at the dumpster located near the parks restrooms.

GREY WATER: The discharge of grey water and sewage is prohibited.

NOISE: Quiet hours are from 10:00PM until 6:00AM. Unreasonable or excessive noise at any time is prohibited.

PETS must be kept on a leash not to exceed 6 feet in length. Pets are not allowed in restrooms, playgrounds, shelters, or designated swim areas.

FIRES must be confined in a designated fire ring or grill. Only dead wood on the ground may be collected for firewood. No chainsaws may be used.

COMPLETE RULES AND REGULATIONS are posted at the entrances to all campgrounds.



Campsite Reservation Cancellation Policy

Toto Creek Park and War Hill Park

UPDATED 2/2/24

Changes and Cancellations

A service fee of \$10.00 will apply for all reservation changes and cancellations and will be deducted from the overall refund amount.

Changes and cancellations made within 48 hours of the scheduled arrival date will result in a \$10.00 service fee charge and forfeiture of the first nights reservation fee.

Changes or cancellations made outside of this window will result in a \$10.00 service fee charge, which will be deducted from the overall refund amount.

No-shows

Failure to arrive at the campsite on the scheduled arrival date without prior cancellation of the reservation will result in forfeiture of the first nights use fee.

Please consider this when making any changes or cancellations.

To change or cancel your reservation, please call the Dawson County Parks & Recreation main office at (706) 344-3646 during regular business hours (Mon-Fri 8AM-5PM).